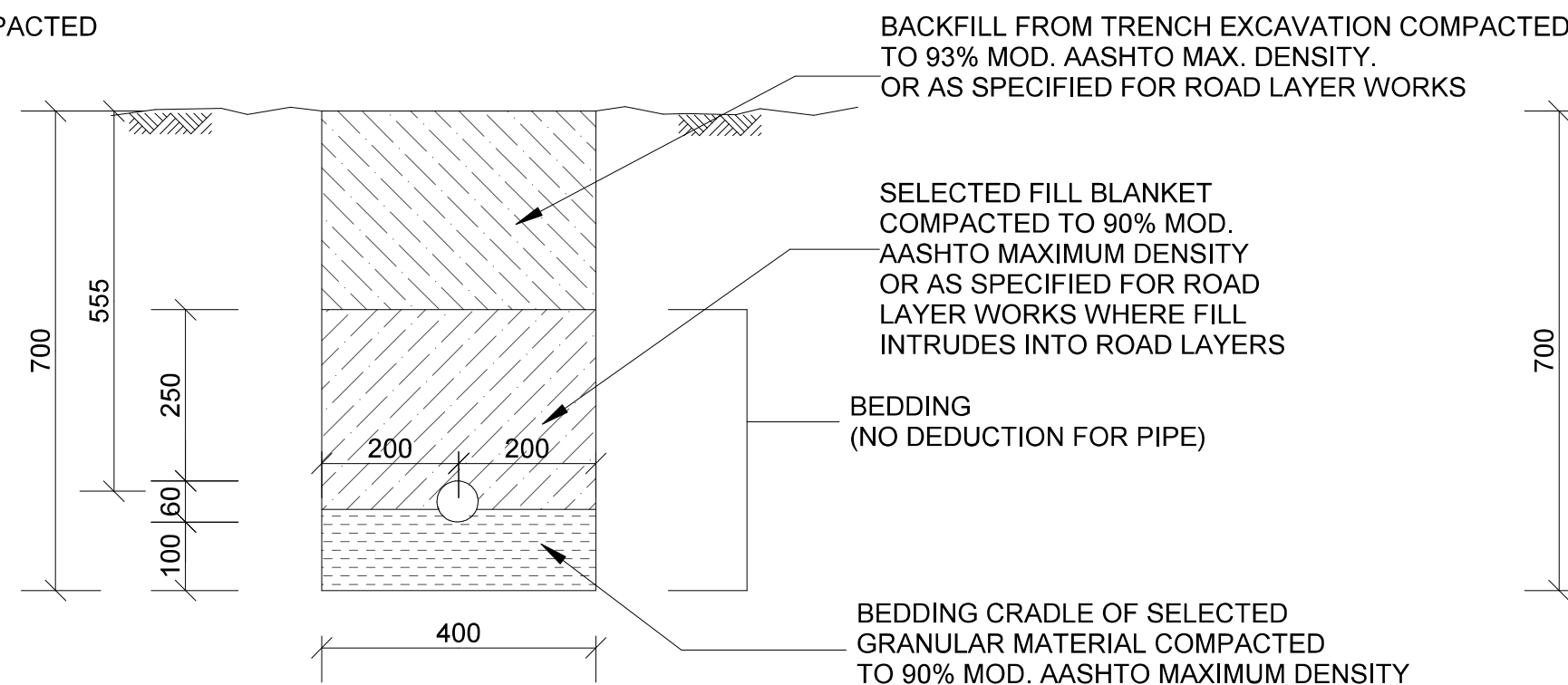
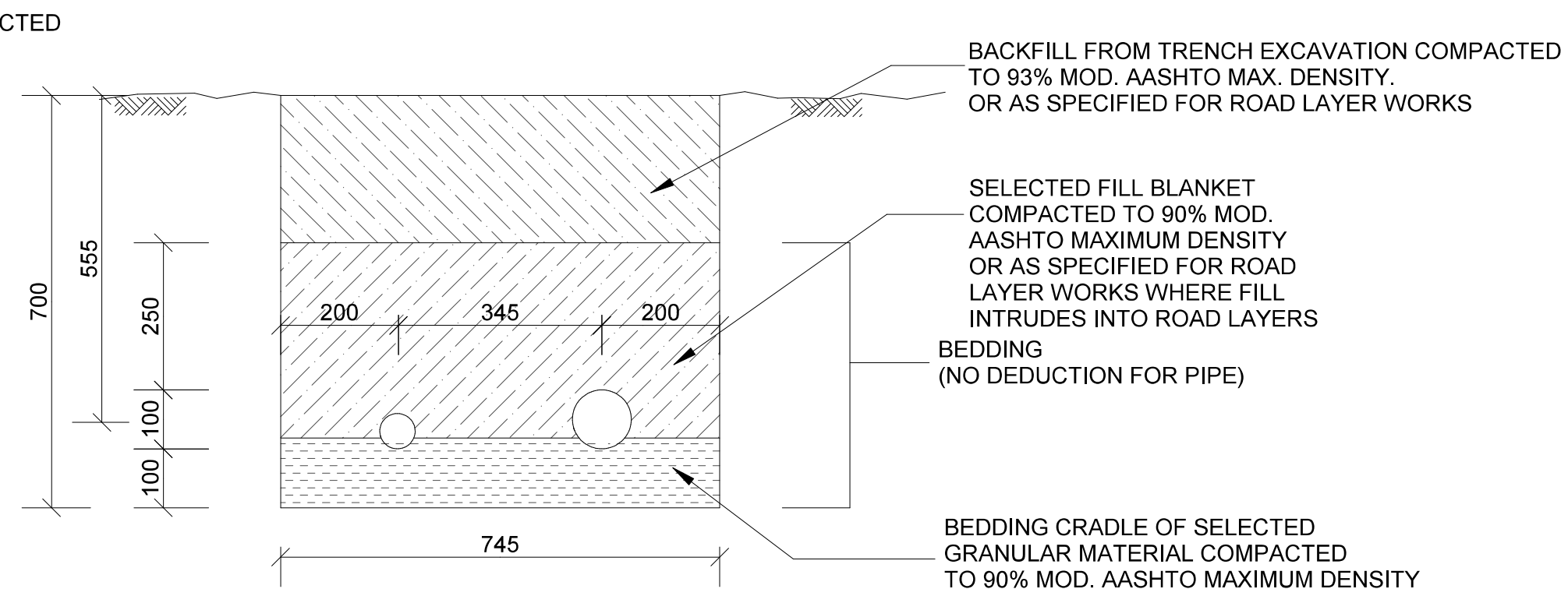


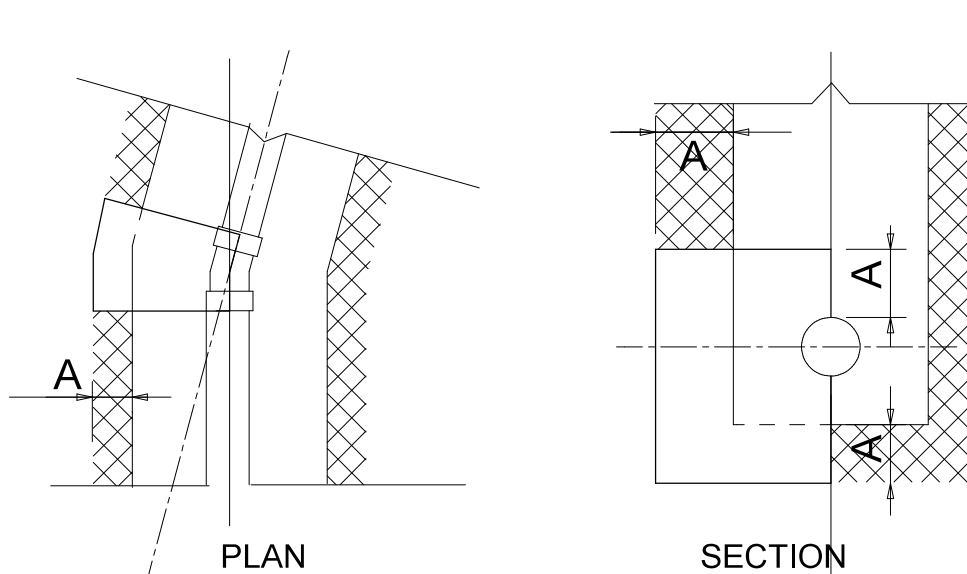
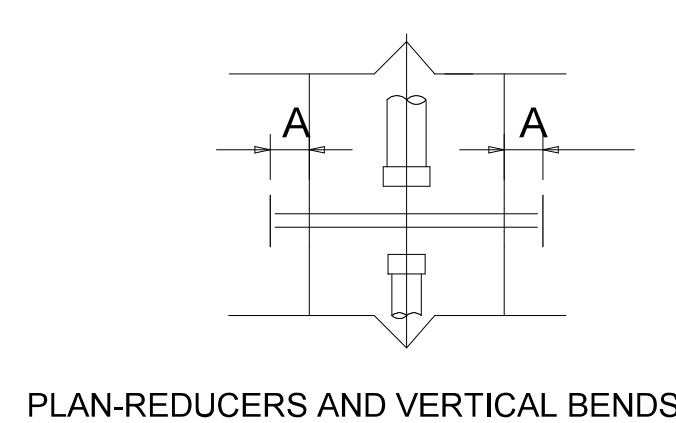
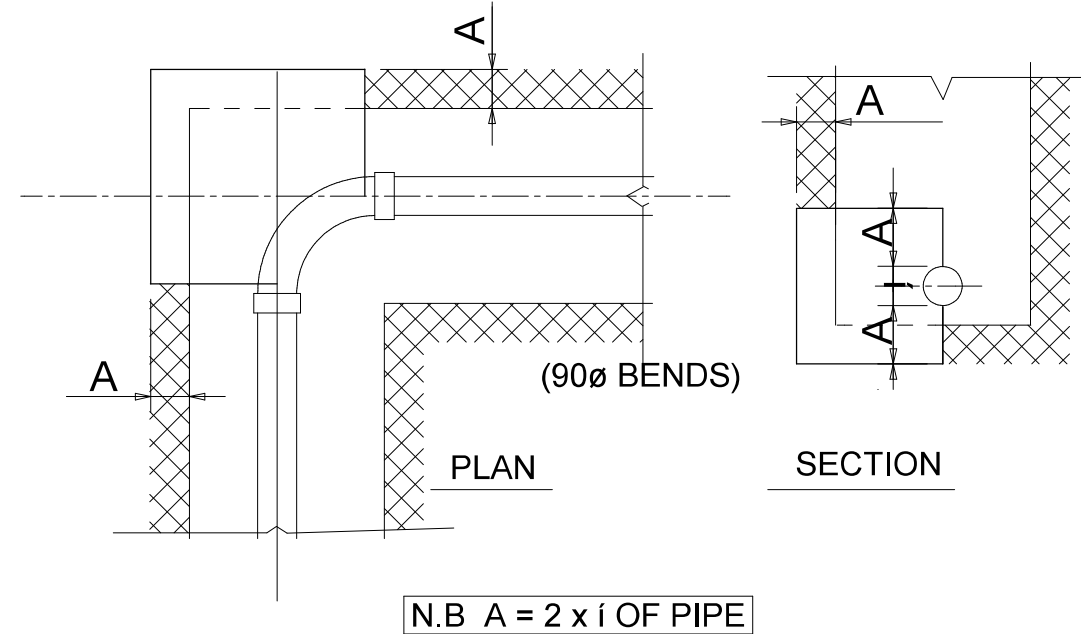
**TYPICAL SECTION - PIPE TRENCH  
FOR Ø32mm PIPE - R.W.H. SUPPLY**  
SCALE 1:10



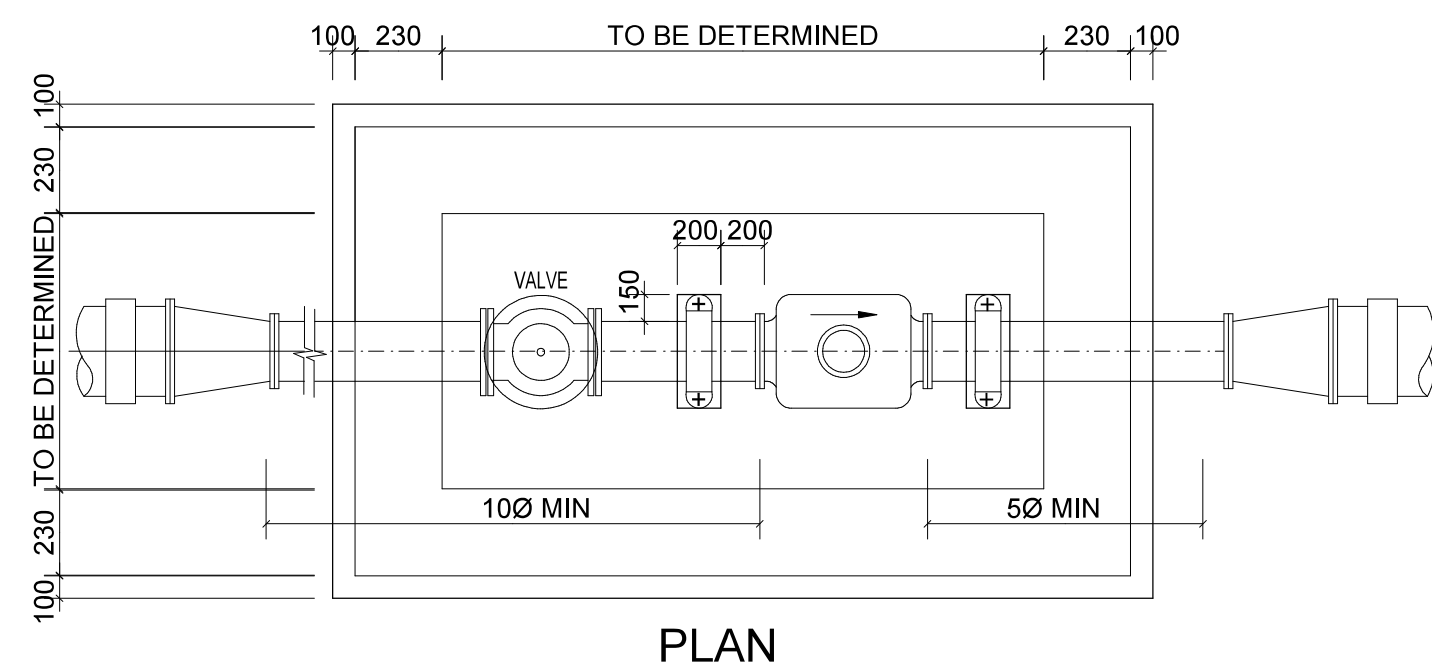
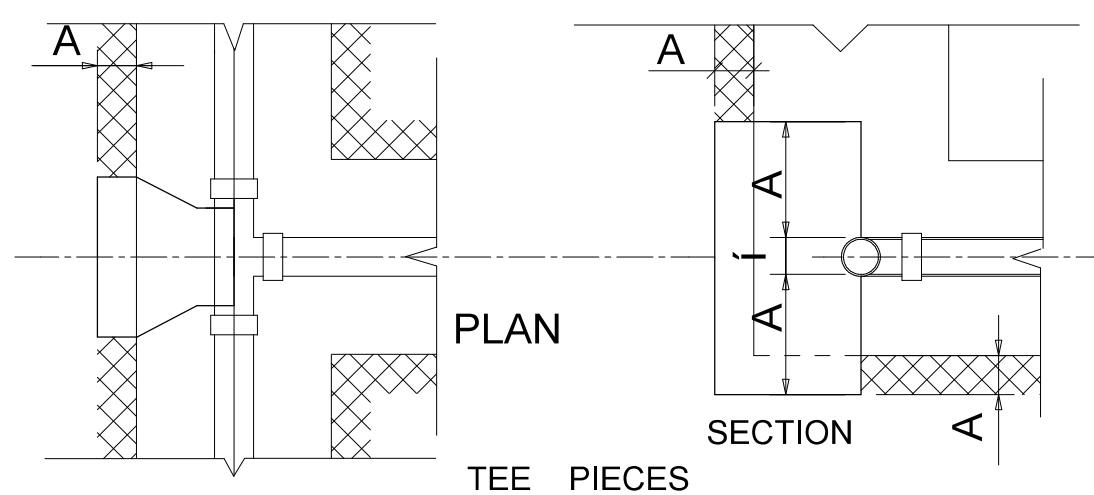
**TYPICAL SECTION - PIPE TRENCH  
UP TO Ø60mm PIPE - DOMESTIC SUPPLY**  
SCALE 1:10



**TYPICAL SECTION - PIPE TRENCH  
FOR Ø60-110mm PIPE - DOMESTIC & FIRE SUPPLY**  
SCALE 1:10

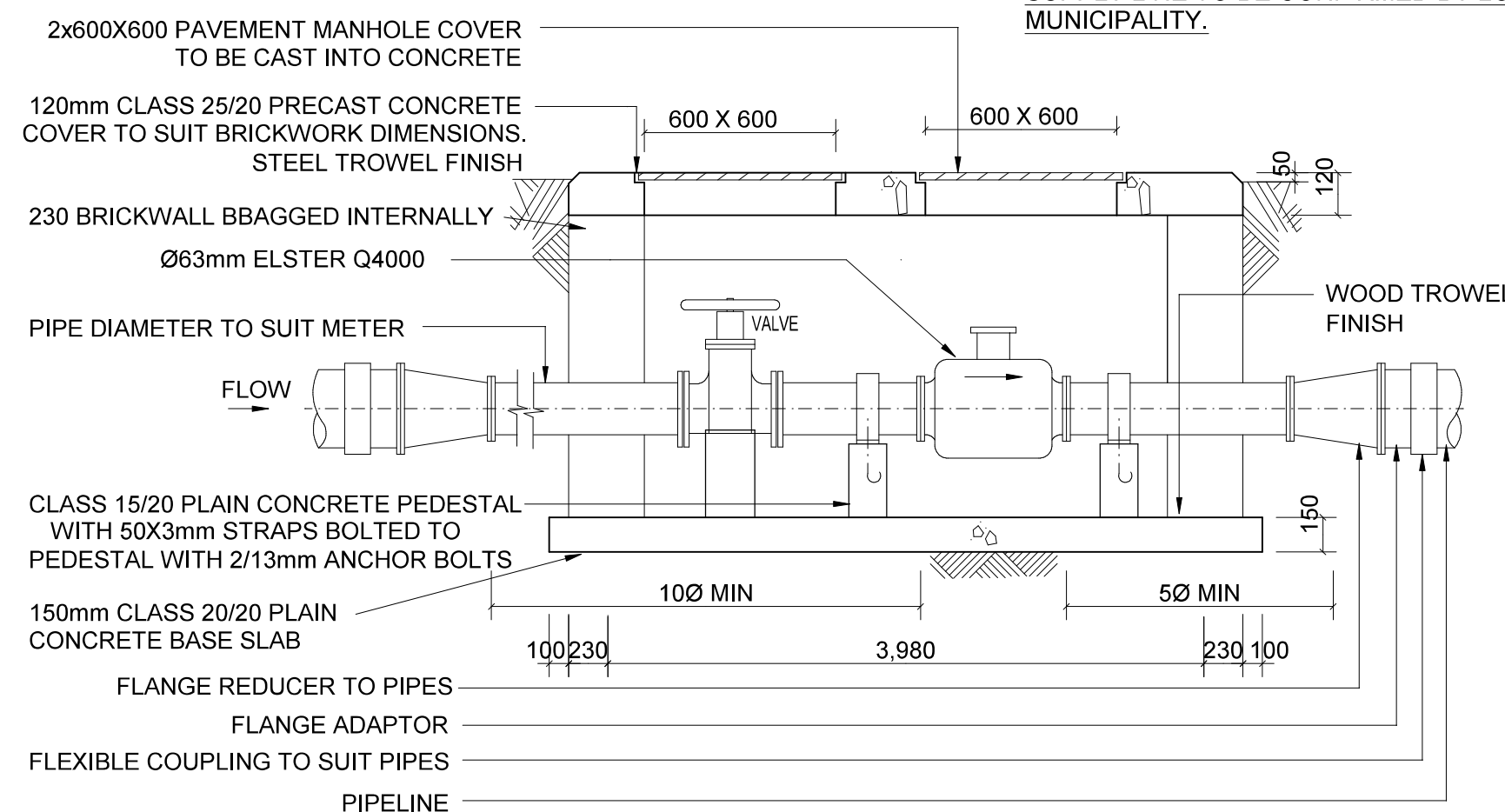


N.B. CONCRETE FOR THRUST AND ANCHOR BLOCKS TO BE TO BE CLASS 20/20. COUPLINGS NOT TO BE CAST IN CONCRETE UNLESS UNAVOIDABLE AND APPROVED BY ENGINEER.

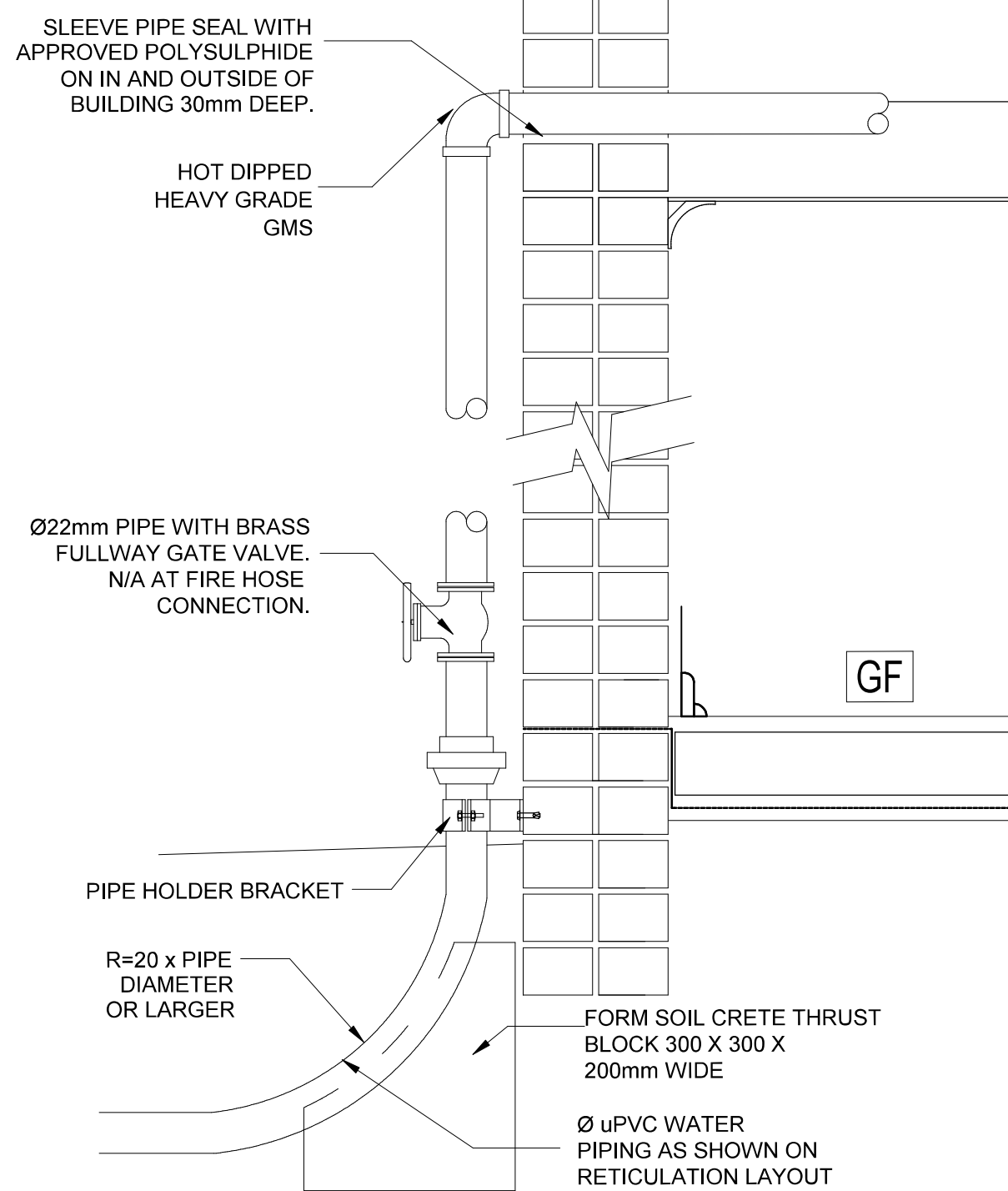


**PLAN**

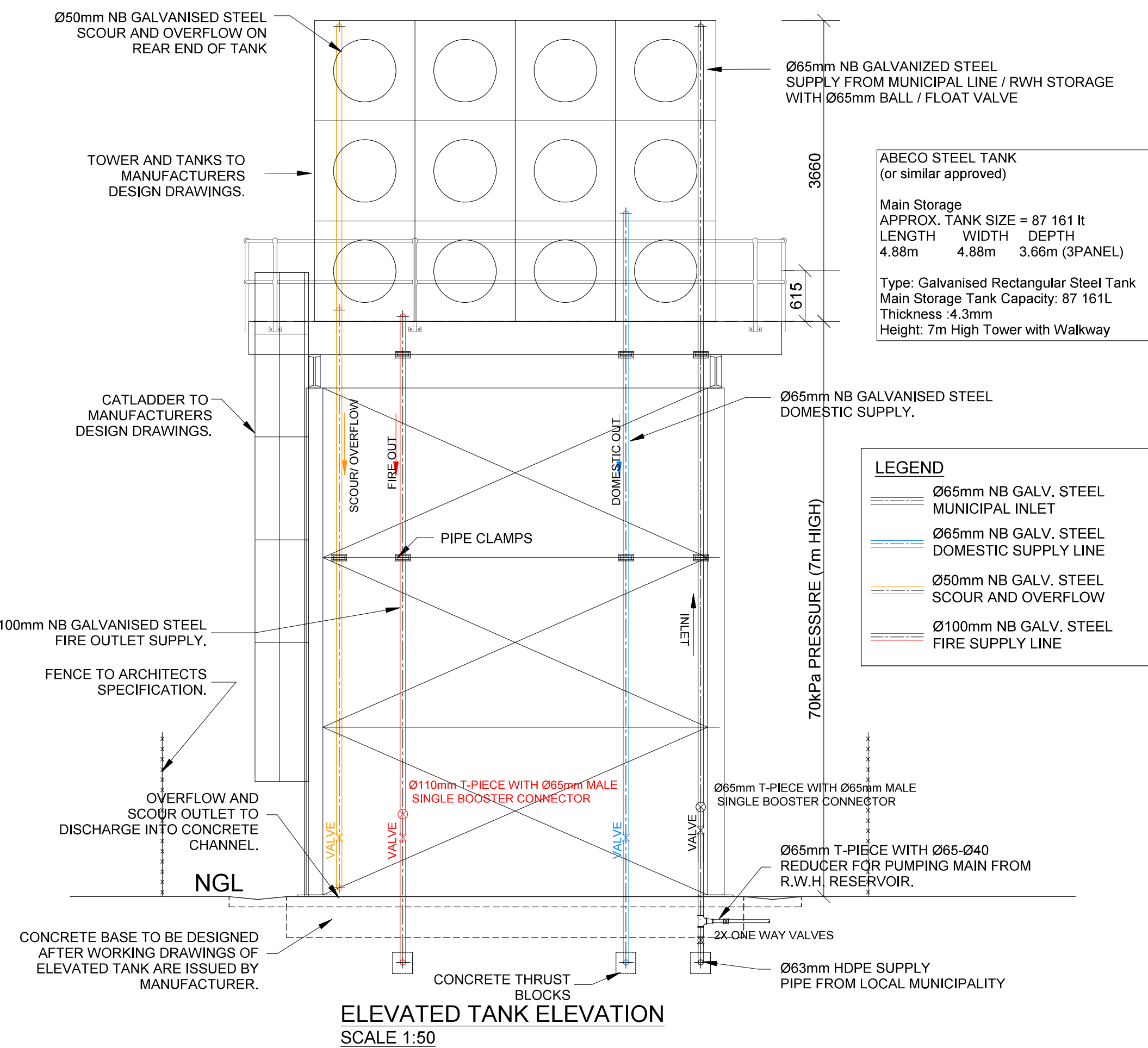
NOTE:  
WATER CONNECTION AND RETICULATION  
SUPPLY LINE TO BE CONFIRMED BY LOCAL  
MUNICIPALITY.



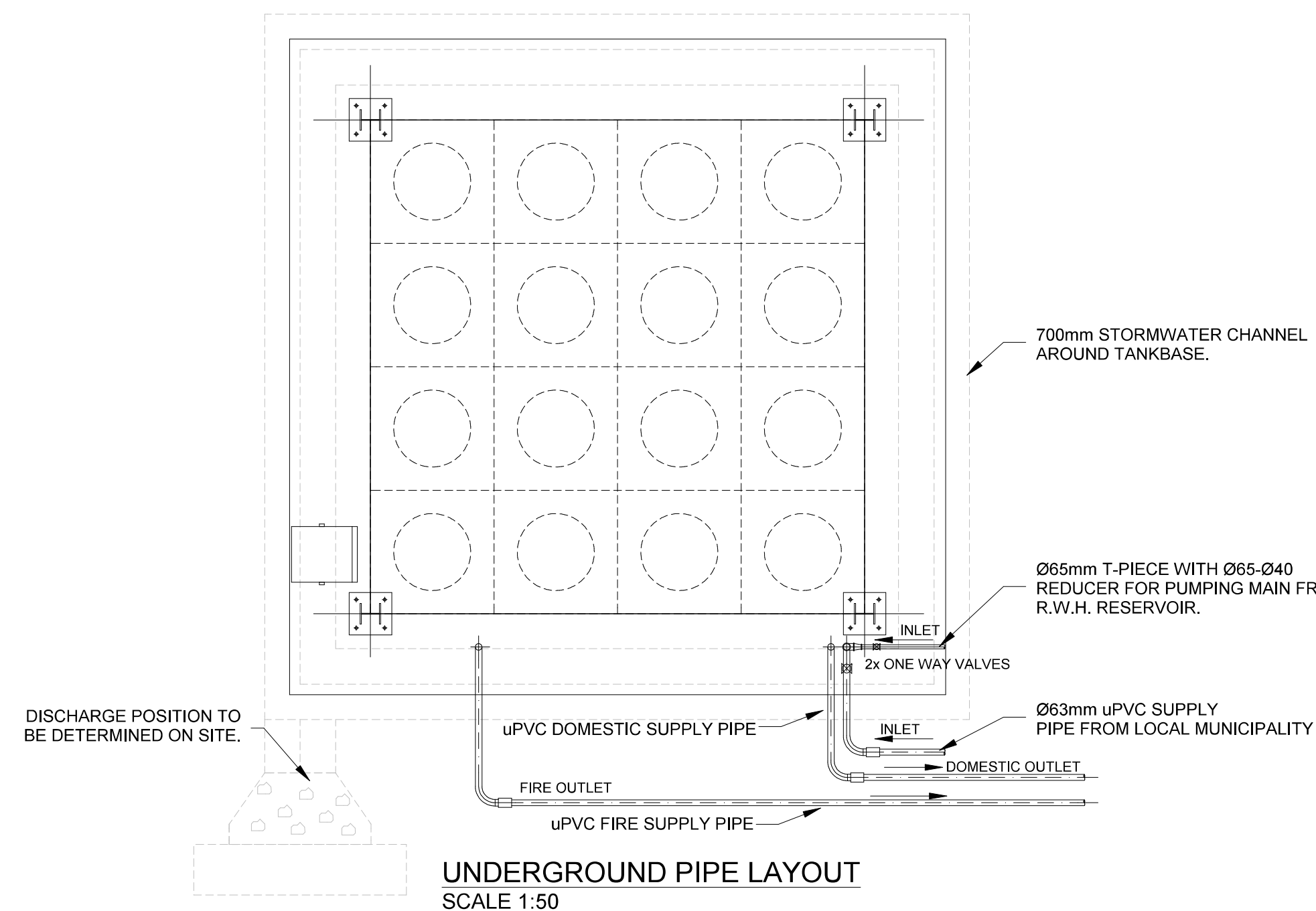
**TYPICAL DETAIL OF WATER METER CHAMBER**  
NOT TO SCALE



**TYPICAL DETAIL OF WATER CONNECTION**  
SCALE 1:10 (A1)



**ELEVATED TANK ELEVATION**  
SCALE 1:50



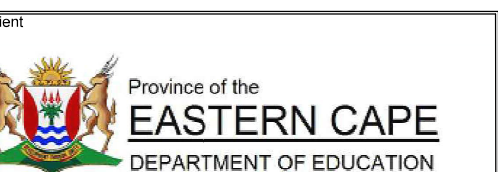
**UNDERGROUND PIPE LAYOUT**  
SCALE 1:50

## GENERAL NOTES

- 1) THIS DRAWING IS COPYRIGHT RESERVED AND REMAINS THE PROPERTY OF SKCM.
- 2) ALL DRAWINGS TO BE READ IN CONJUNCTION WITH THE ARCHITECTS DRAWINGS.
- 3) ALL WORK TO BE EXECUTED IN STRICT COMPLIANCE WITH SANS 10400 & SABS 1200.
- 4) ALL DIMENSIONS TO BE CHECKED ON THE SITE AND ANY DISCREPANCIES TO BE REPORTED TO THE ARCHITECTS/ENGINEER IMMEDIATELY BEFORE COMMENCING WITH ANY WORK.
- 5) WRITTEN DIMENSIONS TO BE USED IN PREFERENCE TO SCALED DIMENSIONS.
- 6) DRAWINGS MAY NOT BE SCALED FROM PRINTS DUE TO DISTORTION OF PRINTS.

NO	DATE	AMENDMENT
TD0	2023/05/24	ISSUED FOR TENDER.

COPYRIGHT IS VESTED IN THIS DOCUMENT AND NO USE OR REPRODUCTION OR DUPLICATION THEREOF MAY OCCUR WITHOUT THE WRITTEN CONSENT OF THE AUTHOR.



MPANDE CONSULTANTS



project  
**DOE Portfolio Programme**  
ESTABLISHMENT OF  
**HILLBROW SCHOOL**  
drawing title  
**CIVIL DETAILS D,  
WATER RETICULATION**

scale	AS SHOWN	designed	HJV
date	25 OCT 2022	drawn	HJV
status	TENDER	checked	MLX
discipline	CE/SE	EMIS	200500494
drawing number	F0279 - 303	revision	TD0